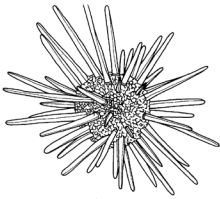


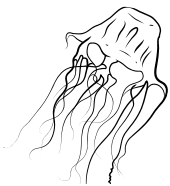
Identifying Animal Phyla

Dichotomous keys use coupled statements about key features that an animal may possess to help identify it. Using the key below determine which phylum each animal at the bottom of the page belongs to. First select an animal, then beginning at statement one, work through all statements until you find the one that best fits that animal. Record the phylum for each animal below its image.

	Description of animal	Phylum
1	a. Has a backbone b. Does not have a backbone	Chordata Go to #2
2	a. Has an exoskeleton b. Does not have an exoskeleton	Arthropoda Go to # 3
3	a. Has tentacles with stinging cells b. Has no tentacles with stinging cells	Cnidaria Go to #4
4	a. Has tube feet b. Does not have tube feet	Echinodermata Go to #5
5	a. Has a muscular foot and shell b. Does not have a muscular foot and shell	Mollusca Go to #6
6	a. Has a segmented body b. Does not have a segmented body	Annelida Go to #7
7	a. Has a flexible body with many pores	Porifera



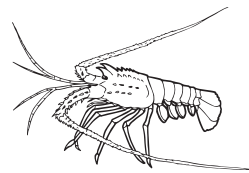
Sea Urchin



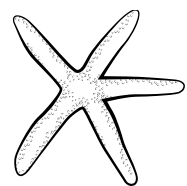
Jellyfish



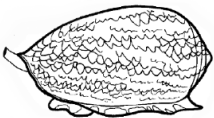
Fish



Crayfish



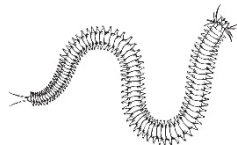
Sea Star



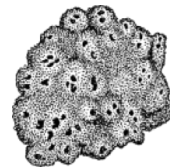
Cone Snail



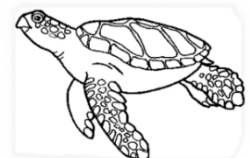
Anemone



Bristle Worm



Sponge



Sea Turtle