

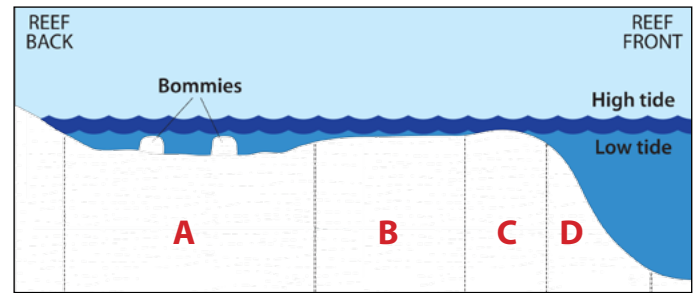
Name

Date

Organisation

- 1** The information provided in the Rapid Monitoring Survey informs Marine Park managers about conditions on the reef. True or false?  
**A** True  
**B** False
  
- 2** The Rapid Monitoring Survey fits into the Early Warning System component of the Eye on the Reef Program. True or false?  
**A** True  
**B** False
  
- 3** The GBRMPA zoning maps can be used to find:  
**A** the Reef ID, tidal charts and Reef name:  
**B** the Marine Park Zone, latitude and longitude.  
**C** the Reef ID, Marine Park Zone and Reef name:  
**D** the Reef ID, Reef name and water temperature.
  
- 4** The preferred GPS format for the latitude and longitude is decimal degrees. An example of decimal degrees is:  
**A** -14.6689°, 145.4594°  
**B** -14°40'08", 145°27'34"  
**C** -14°40.133, 145°27.567

**5** Which letter – A, B, C or D – indicates the lagoon?



**6** Identify the reef habitat highlighted in red.

- A** Lagoon
- B** Flat
- C** Crest
- D** Slope

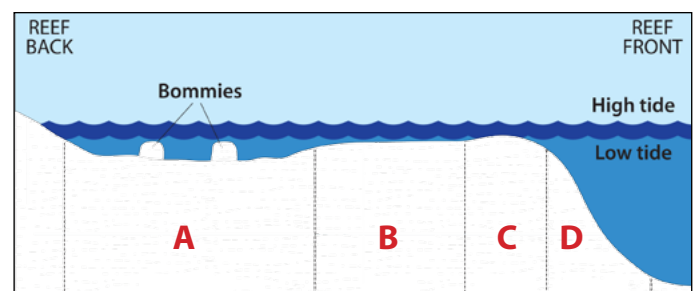


**7** Identify the reef habitat highlighted in red.

- A** Lagoon
- B** Flat
- C** Crest
- D** Slope



**8** Which letter – A, B, C or D – indicates the slope?



**9** Identify the benthos shown in the photo.

- A** Macroalgae
- B** Live coral
- C** Live coral rock
- D** Coral rubble



**10** On the Rapid Monitoring form, in which categories would you put this benthos and animal?

- A** Coral rubble, anemone
- B** Sand, sea cucumber
- C** Gravel, sea cucumber
- D** Gravel, anemone



**11** On the Rapid Monitoring form, in which category would you put this fish?

- A** Anemonefish
- B** Grazing herbivore
- C** Coral trout
- D** Butterflyfish



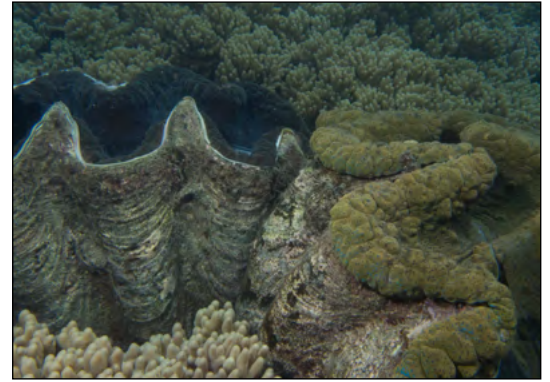
**12** On the Rapid Monitoring form, in which category would you put these fish?

- A** Grazing herbivores
- B** Butterflyfish
- C** Coral trout
- D** Anemonefish



**13** On the Rapid Monitoring form, in which category would you put these animals?

- A** Giant clam
- B** Sea cucumber
- C** Hard coral
- D** Macroalgae



**14** Identify the turtle species shown in the photo.

- A** Hawksbill turtle
- B** Green turtle
- C** Leatherback turtle
- D** Olive Ridley turtle



**15** On the Rapid Monitoring form, in which category would you put this fish?

- A** Parrotfish
- B** Cod
- C** Grouper
- D** Maori wrasse



**16** On the Rapid Monitoring form, in which category would you put this fish?

- A** Coral trout
- B** Maori wrasse
- C** Grazing herbivores
- D** Shark





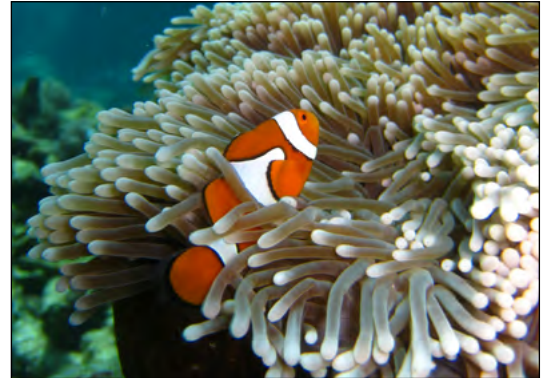
**17** On the Rapid Monitoring form, in which category would you put this animal?

- A** Giant clam
- B** *Drupella*
- C** Sea cucumber
- D** Anemone



**18** On the Rapid Monitoring form, in which category would you put this fish?

- A** Anemonefish
- B** Grazing herbivores
- C** Butterflyfish
- D** Sea cucumber



**19** On the Rapid Monitoring form, in which category would you put this fish?

- A** Maori wrasse
- B** Cod
- C** Coral trout
- D** Grazing herbivores



**20** Identify the shark species shown in the photo.

- A** Blacktip reef shark
- B** Whitetip reef shark
- C** Epaulette shark
- D** Leopard shark



**21** Identify the benthos indicated in the photo.

- A** Live coral
- B** Recently dead coral
- C** Live coral rock
- D** Coral rubble



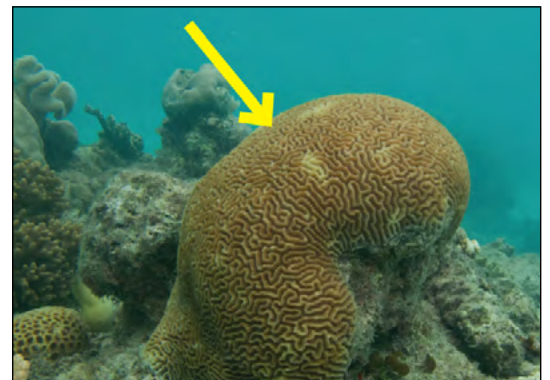
**22** Identify the benthos shown in the photo.

- A** Macroalgae
- B** Recently dead coral
- C** Live coral rock
- D** Coral rubble



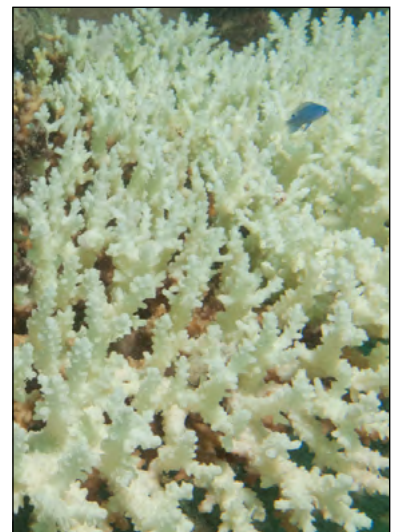
**23** Identify the benthos shown in the photo.

- A** Macroalgae
- B** Live coral
- C** Recently dead coral
- D** Live coral rock



**24** Identify the benthos shown in the photo.

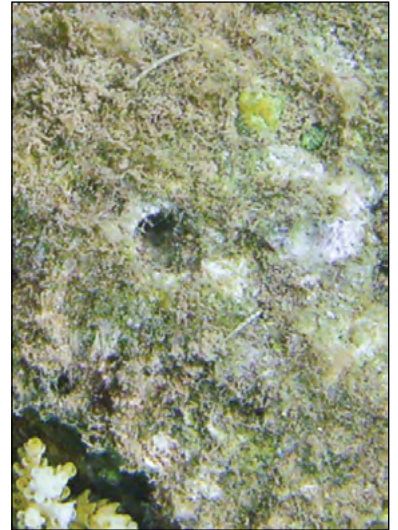
- A** Macroalgae
- B** Recently dead coral
- C** Live coral rock
- D** Coral rubble





**25** Identify the benthos shown in the photo.

- A** Macroalgae
- B** Recently dead coral
- C** Coral rubble
- D** Live coral rock



**26** Identify the benthos shown in the photo.

- A** Macroalgae
- B** Live coral
- C** Recently dead coral
- D** Live coral rock



**27** Identify the benthos shown in the photo.

- A** Macroalgae
- B** Recently dead coral
- C** Live coral
- D** Live coral rock







**31** The photo shows an example of coral bleaching. True or false?

- A** True
- B** False



**32** The photo shows an example of predation. True or false?

- A** True
- B** False



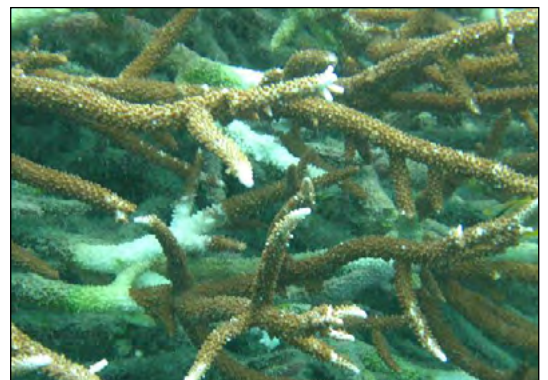
**33** The photo shows an example of predation by *Drupella*. True or false?

- A** True
- B** False



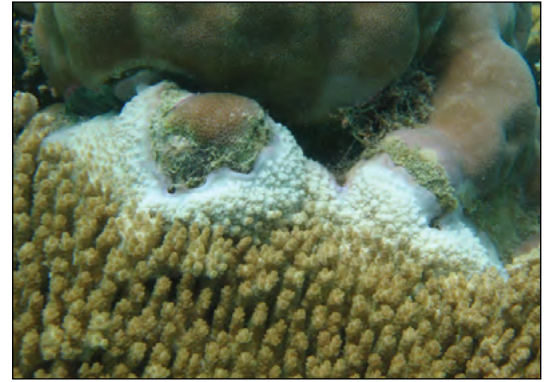
**34** The photo shows an example of bleaching. True or false?

- A** True
- B** False



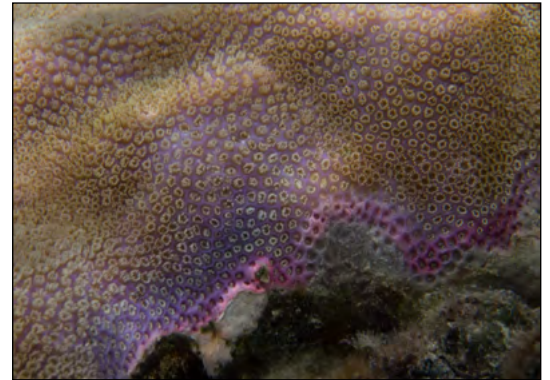
**35** The photo shows an example of coral competition. True or false?

- A** True
- B** False



**36** The photo shows an example of disease. True or false?

- A** True
- B** False



**37** The photo shows an example of disease. True or false?

- A** True
- B** False



**38** The photo shows an example of damage. True or false?

- A** True
- B** False



**39** The photo shows an example of Crown-of-thorns starfish predation. True or false?

- A** True
- B** False



**40** Some corals such as the one shown in this photo are naturally pale. This is not an impact. True or false?

- A** True
- B** False



When you are finished, go to the **File** menu and choose 'Save as' (not 'Save') to keep a copy of your answers.



Name

Date

Organisation

The answers you enter on the previous pages will also appear here.  
This makes it easier to mark the answers, or you can print the page first  
so you can answer with pen on paper.

<b>1</b>	<b>11</b>	<b>21</b>	<b>31</b>
<b>2</b>	<b>12</b>	<b>22</b>	<b>32</b>
<b>3</b>	<b>13</b>	<b>23</b>	<b>33</b>
<b>4</b>	<b>14</b>	<b>24</b>	<b>34</b>
<b>5</b>	<b>15</b>	<b>25</b>	<b>35</b>
<b>6</b>	<b>16</b>	<b>26</b>	<b>36</b>
<b>7</b>	<b>17</b>	<b>27</b>	<b>37</b>
<b>8</b>	<b>18</b>	<b>28</b>	<b>38</b>
<b>9</b>	<b>19</b>	<b>29</b>	<b>39</b>
<b>10</b>	<b>20</b>	<b>30</b>	<b>40</b>

When you are finished, go to the **File** menu and choose  
**'Save as'** (not **'Save'**) to keep a copy of your answers.